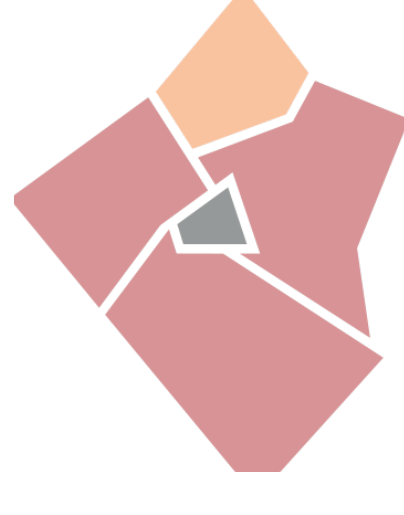
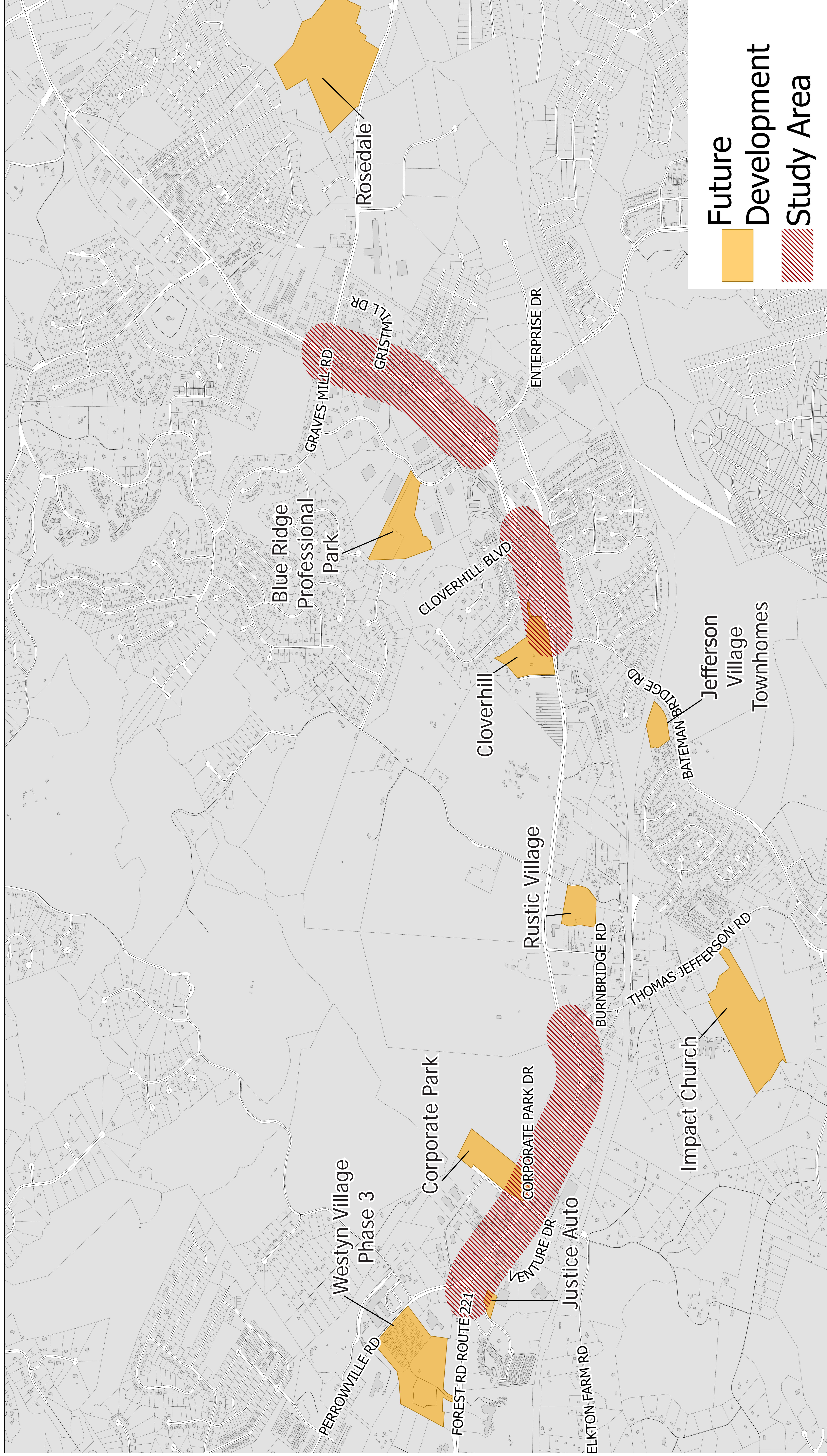


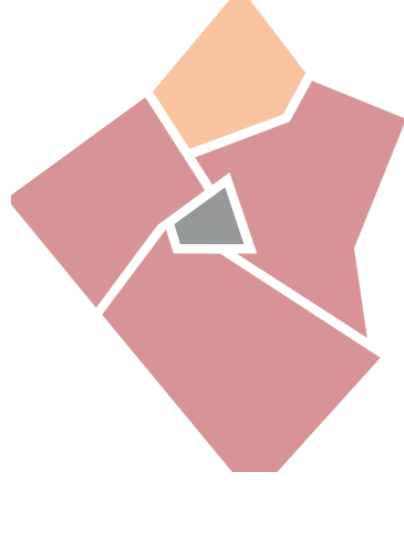
Future Development



The known planned developments on, or near, Forest Road are shown on the map below.

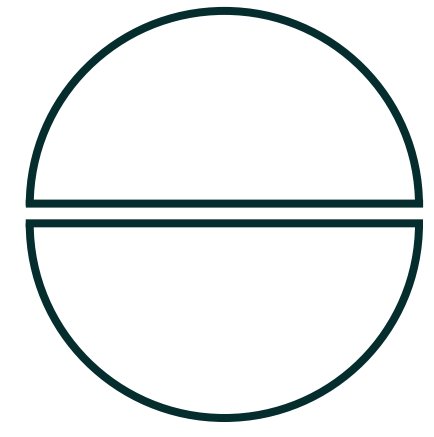


Existing Traffic Conditions

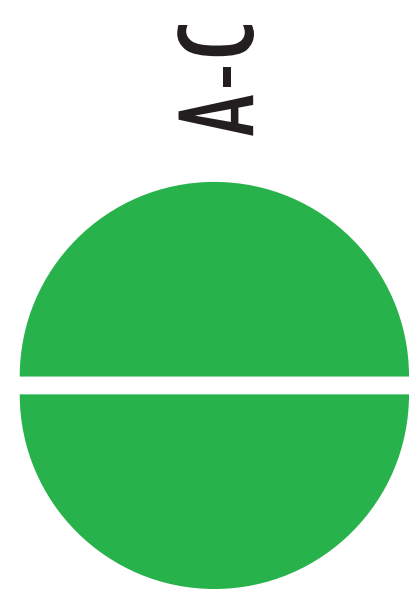


Traffic operations are measured in levels of service (LOS) and queue lengths. Letters designate each level, from A to F, with LOS A representing the best operating conditions and LOS F the worst. LOS is directly related to the delay experienced by motorists. Generally, LOS A-D are considered acceptable. LOS E and F indicate congested conditions. Queue lengths are measured in feet.

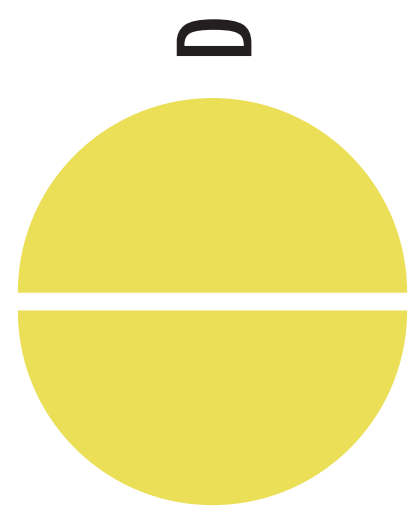
Intersection LOS



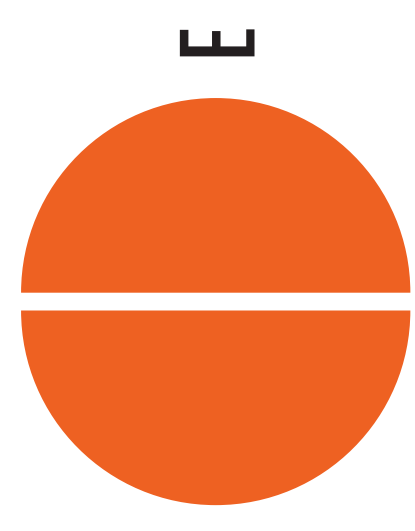
AM/PM Peak Hour



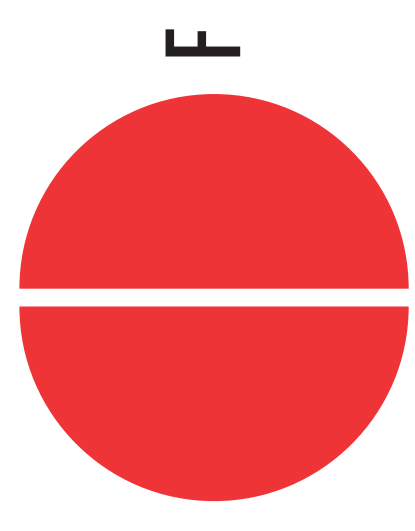
A-C



D



E

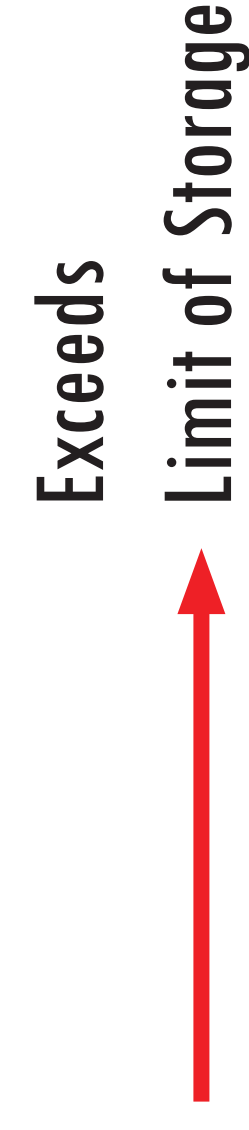


F

Queue Lengths



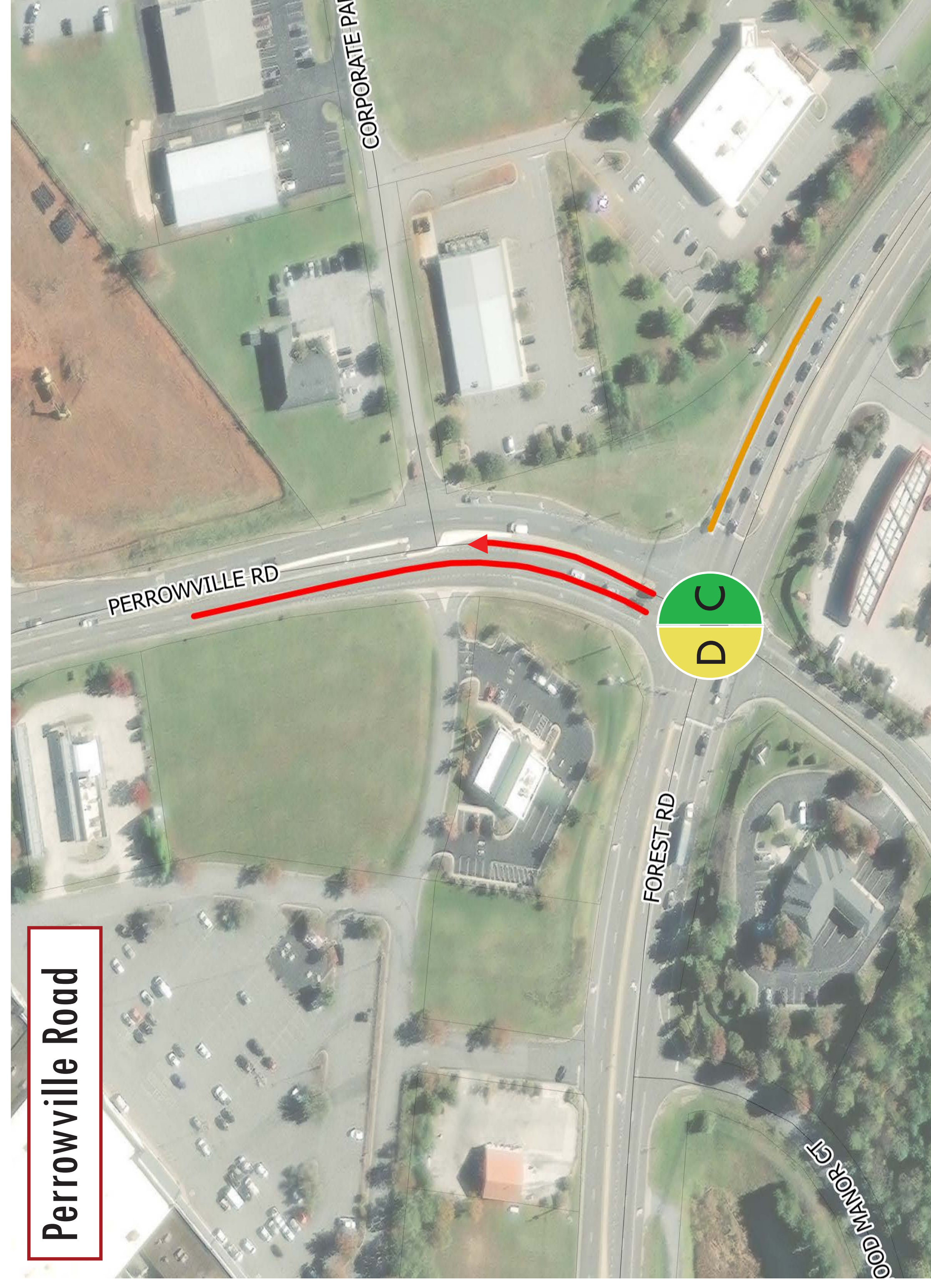
> 500 Feet



Exceeds
Limit of Storage
Area



Approaching
Limit of Storage
Area



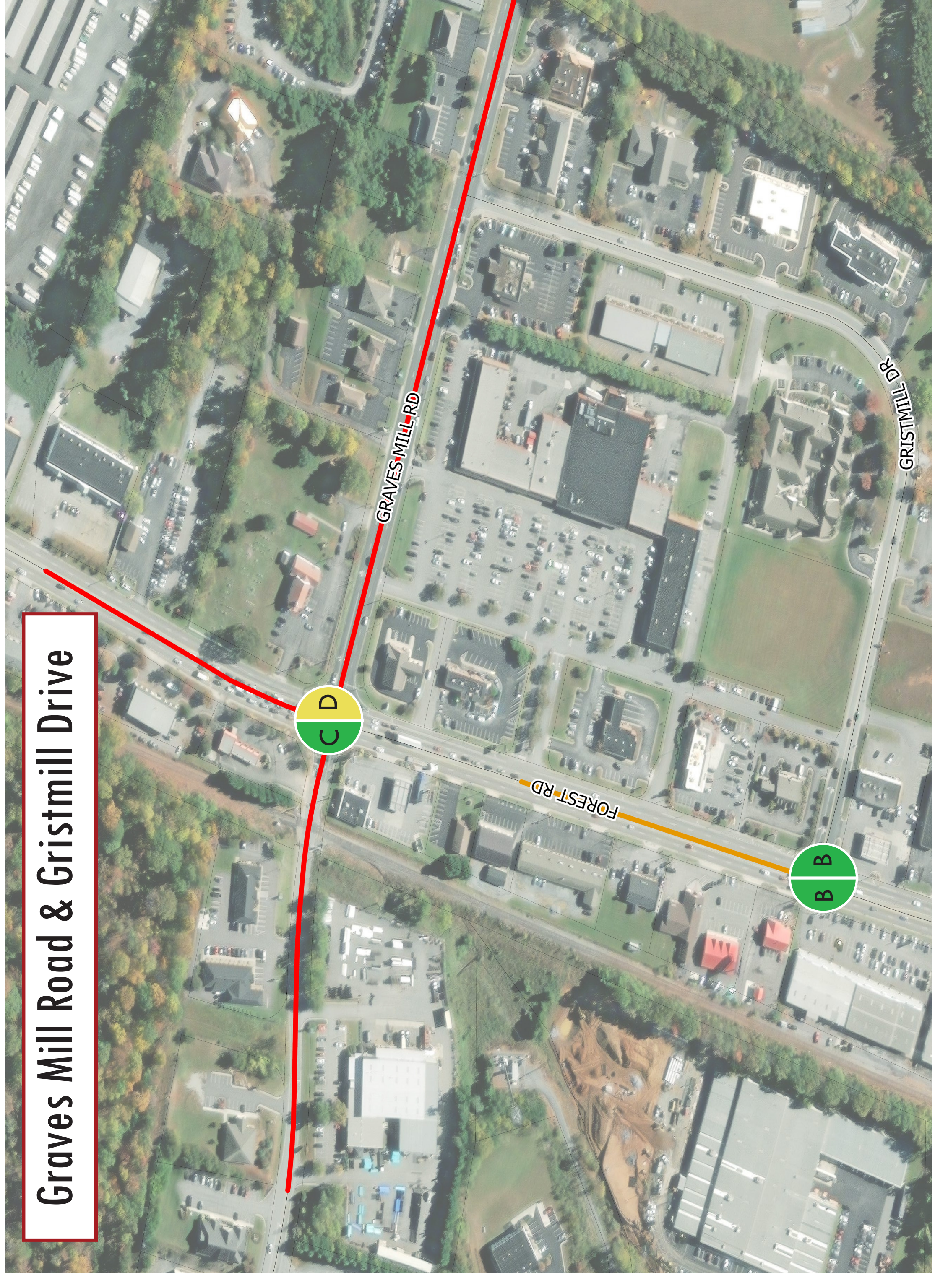
Perrowville Road



Thomas Jefferson Road



Enterprise Drive



Graves Mill Road & Gristmill Drive

Next Steps

Schedule

Fall

- Improvement Alternatives Analysis

January

- Conduct second Public Meeting focused on potential improvement alternatives
- Conduct potential improvement alternatives public survey

February and March

- Finalize study recommendations

Spring

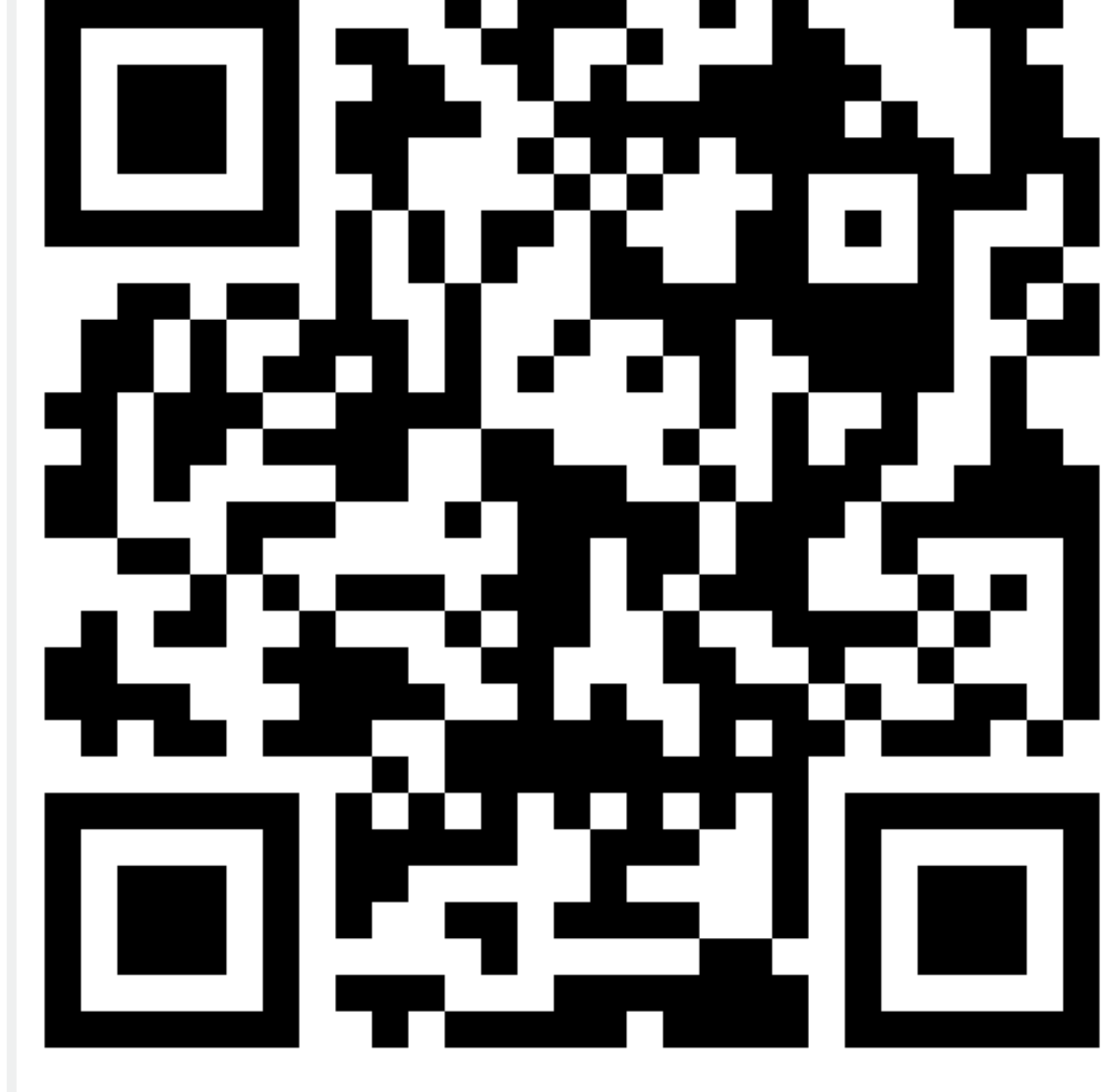
- Draft report



Forest Rd intersection with Thomas Jefferson Rd

Take the Online Survey

Scan the QR Code below to take the survey.



Approaching Forest Rd Intersection with Ambassador Dr

