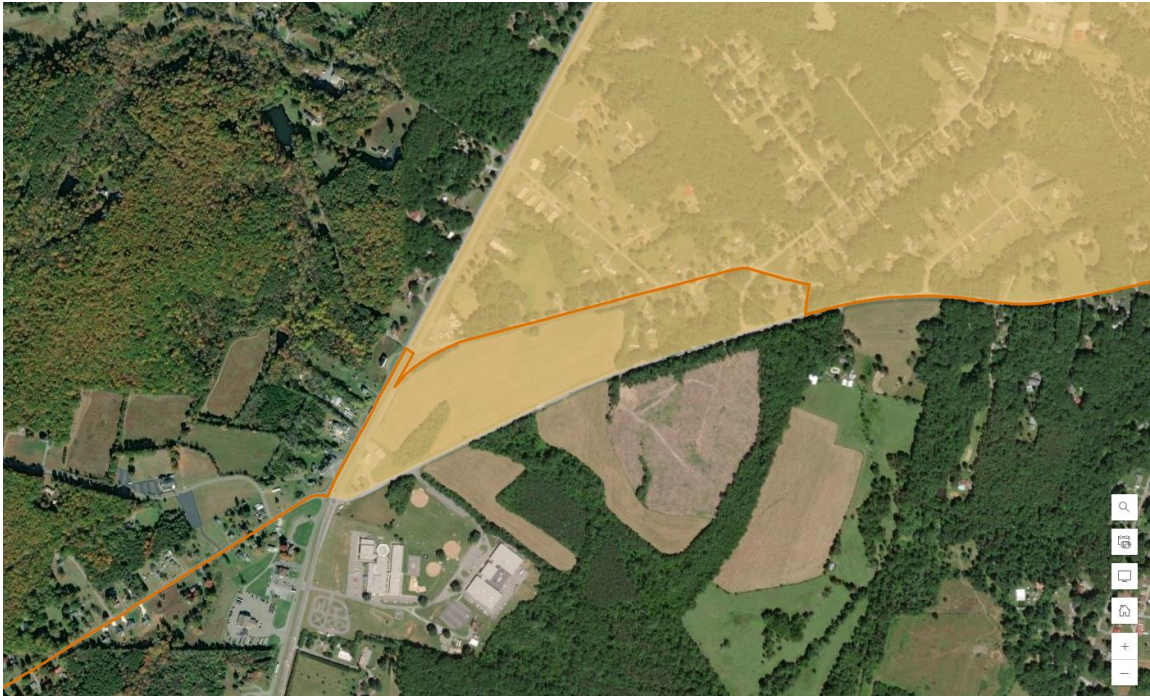


CVTPO Boundary Adjustment

The following locations have been identified by VDOT Central Office as locations that, according to the 2020 updated Urban Area tracts, should be added to the MPO boundary. The CVTPO boundary extension locations are supported in the updated LRTP Travel Demand Model and were recommended for extension approval by the TTC.



Yellow Branch Extension – Extend existing CVTPO (orange line) to align with Route 24/Colonial Highway. CVTPO Extension = Mustard area



Amherst Town Extension – Extend existing CVTPO (orange line) to pick up homes along Sunset Drive, better align with Town Boundary. CVTPO Extension = Mustard Area